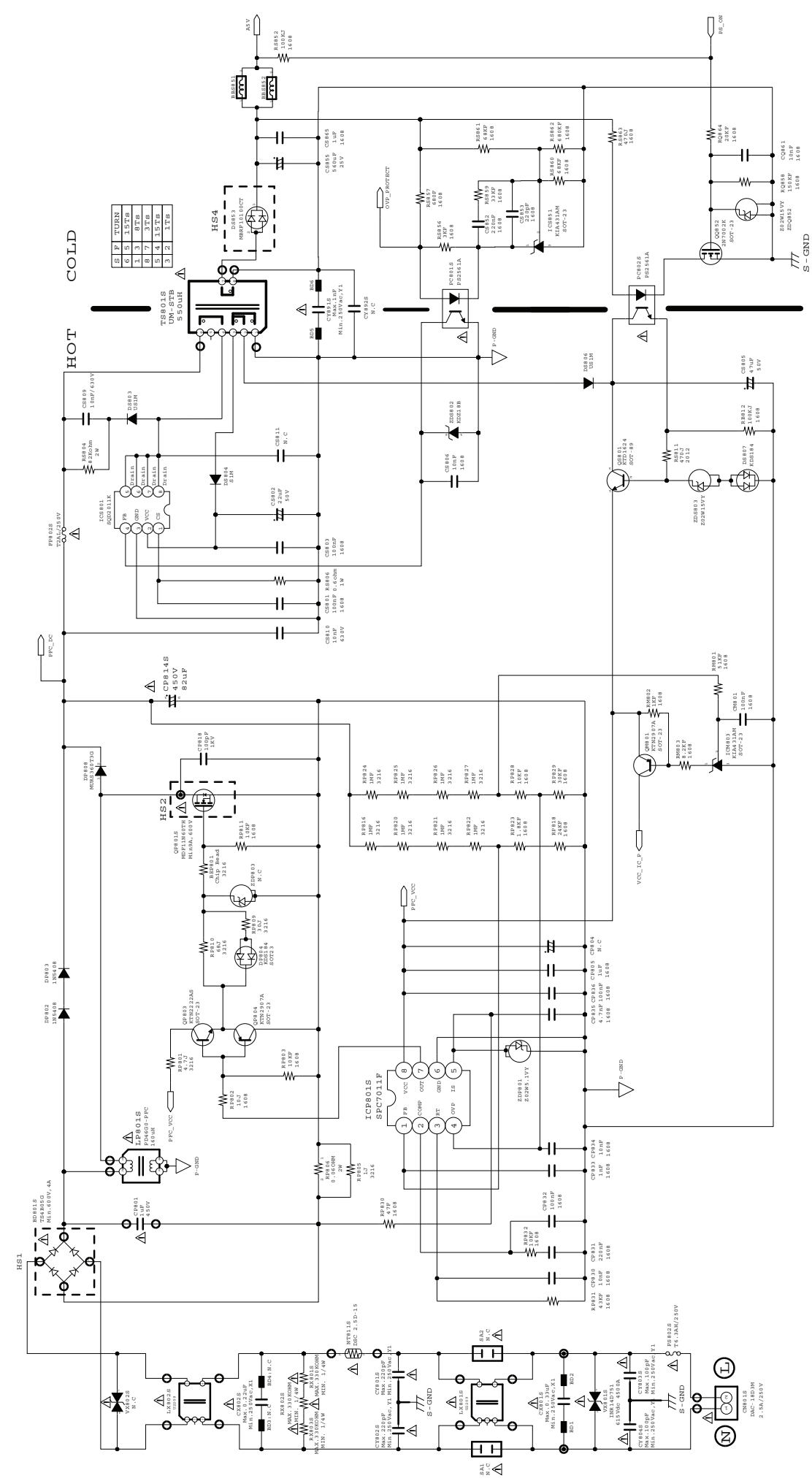




SPECIFICATION
PD46G0_BSM
(CIRCUIT DRAWING)

STD RECORD NO. BN44-00473A
PAGE PUB. DATE 2011.03.11
PAGE REV. DATE

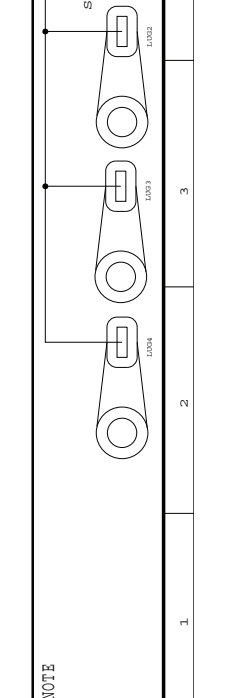
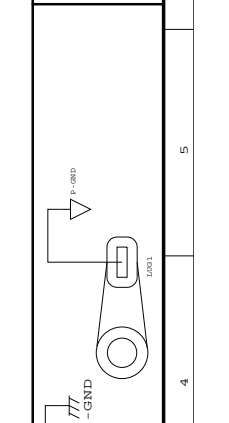
4. CIRCUIT DRAWING



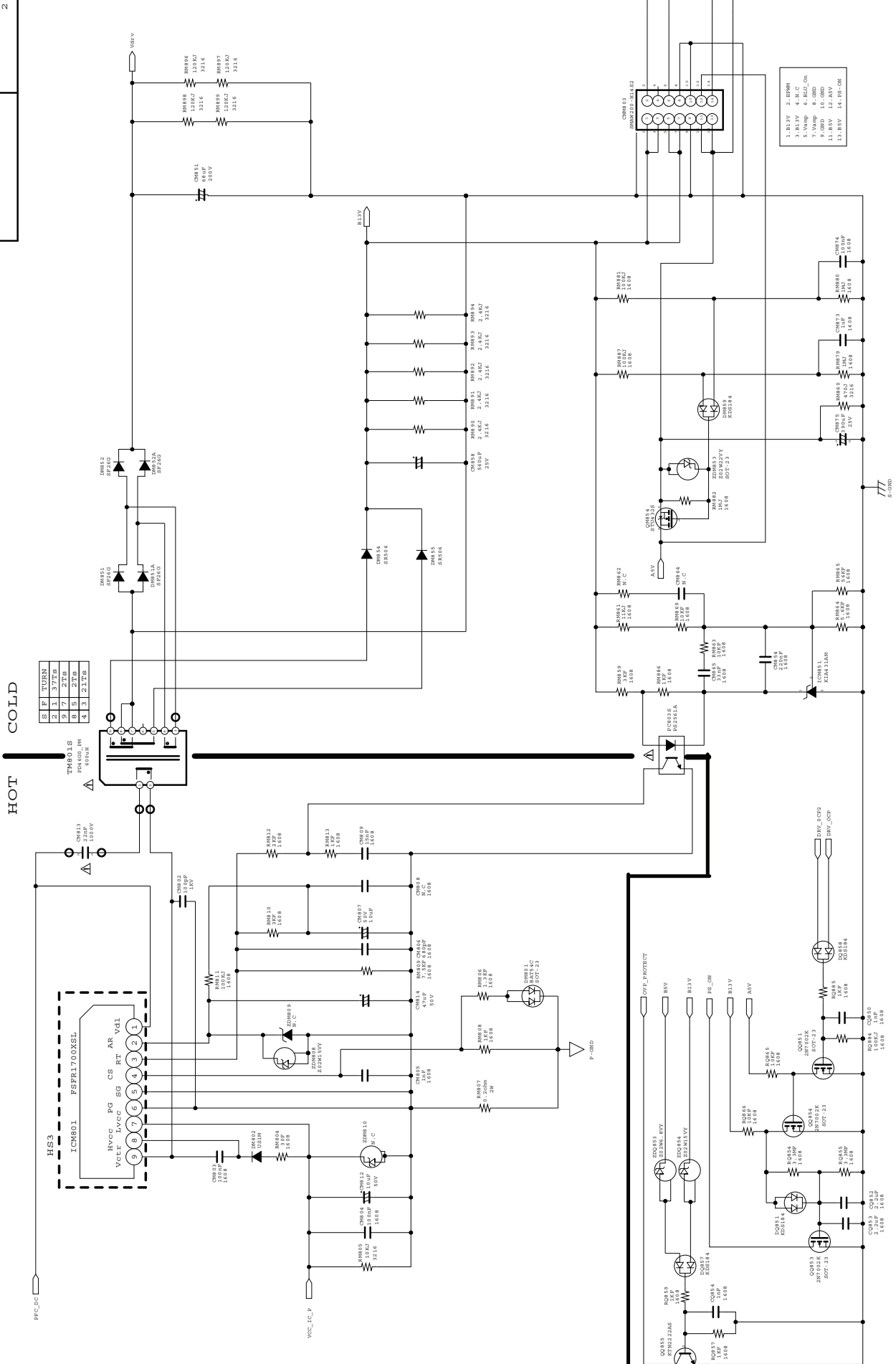
| REV | DESCRIPTION | DATE |
|-----|-------------|------|
| 1 | TURN | |
| 2 | REV | |
| 3 | REV | |
| 4 | REV | |
| 5 | REV | |
| 6 | REV | |
| 7 | REV | |
| 8 | REV | |
| 9 | REV | |

| DATE | USER | SCALE | REVISION | COMPOSITE CODE |
|----------|------------|-------|----------|----------------|
| 11.04.27 | Y. M. Jung | | R. B | |
| | Y. M. Jung | | R. B | |
| | Y. M. Jung | | R. B | |
| | Y. M. Jung | | R. B | |

| MODEL NAME | REV | DATE |
|-------------|-----|------|
| PD460_BSM | | |
| PS1P121A03S | | |
| BN44-00473A | | |



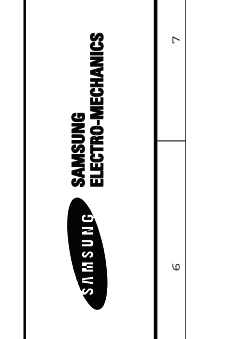
NOTE



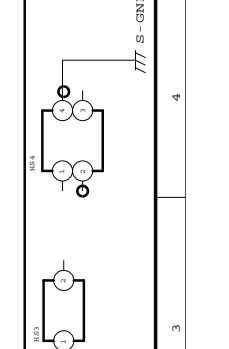
* N.C : No Connection

| DATE | 11.04.27 |
|------------|------------|
| USER | Y.M.Jung |
| MODEL NAME | PD4600_BSM |
| SCALE | R.B |
| REVISION | F.S.Kim |
| LEVEL | H.G.Choi |

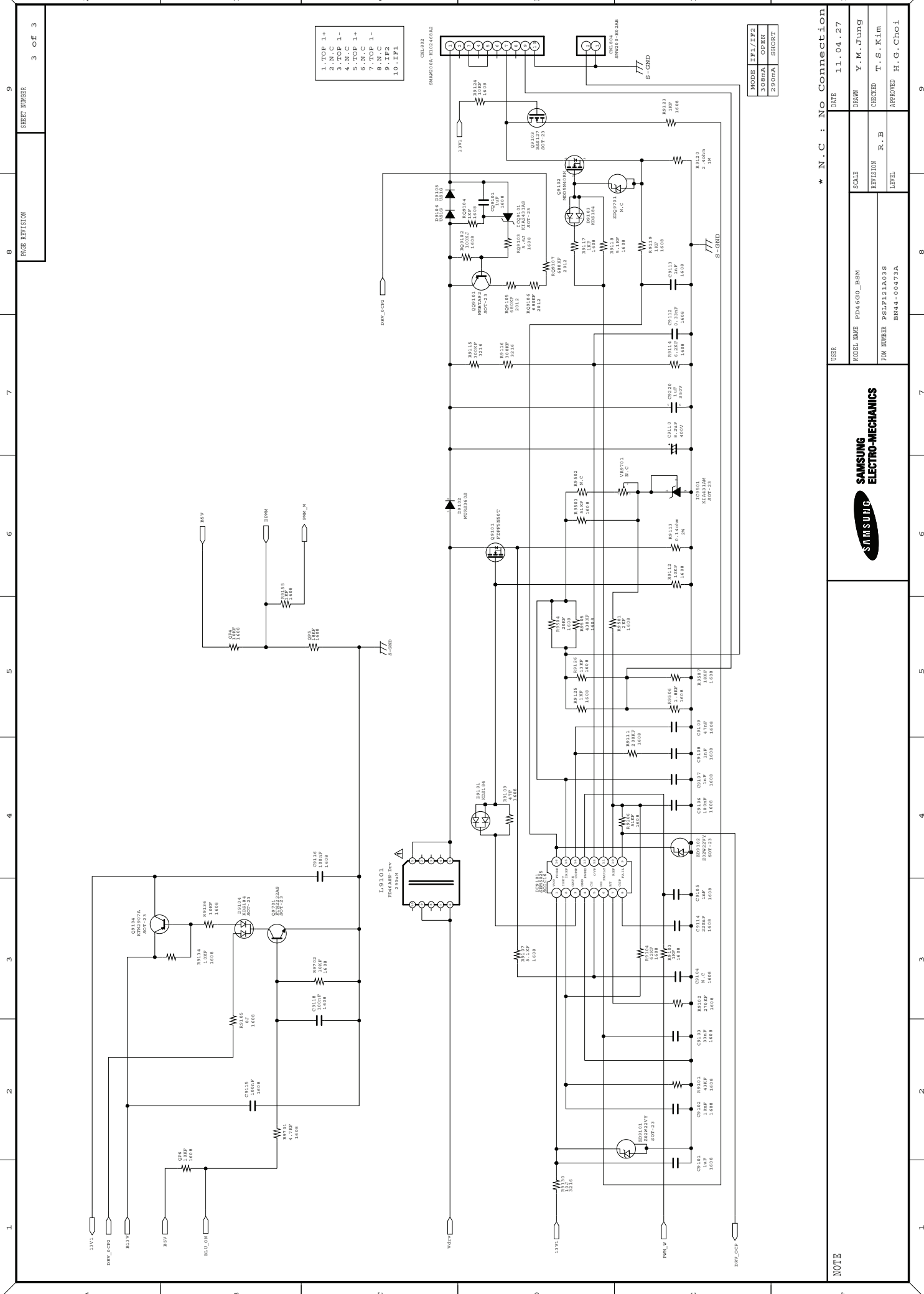
| DATE | 11.04.27 |
|------------|------------|
| USER | Y.M.Jung |
| MODEL NAME | PD4600_BSM |
| SCALE | R.B |
| REVISION | F.S.Kim |
| LEVEL | H.G.Choi |



| DATE | 11.04.27 |
|------------|------------|
| USER | Y.M.Jung |
| MODEL NAME | PD4600_BSM |
| SCALE | R.B |
| REVISION | F.S.Kim |
| LEVEL | H.G.Choi |



| DATE | 11.04.27 |
|------------|------------|
| USER | Y.M.Jung |
| MODEL NAME | PD4600_BSM |
| SCALE | R.B |
| REVISION | F.S.Kim |
| LEVEL | H.G.Choi |



- 1. TOP 1+
- 2. N.C
- 3. TOP 1-
- 4. N.C
- 5. TOP 1+
- 6. N.C
- 7. TOP 1-
- 8. N.C
- 9. IF2
- 10. IF1

| | |
|-------|---------|
| MODE | IF1/IF2 |
| 300mA | OPEN |
| 250mA | SHORT |

SAMSUNG ELECTRO-MECHANICS

* N.C : No Connection

| | |
|------------|----------|
| USER | DATE |
| MODEL NAME | SCALE |
| PIN NUMBER | REVISION |
| LEVEL | APPROVED |

DRAWN: Y. M. Jung
 CHECKED: T. S. Kim
 R. B.
 H. G. Choi

11.04.27
 PD460_BSM
 PSJF121A03S
 BN44-00473A

NOTE



SPECIFICATION
PD46G0_BSM
(BLOCK DIAGRAM PART)

STD RECORD NO.
PAGE PUB. DATE
PAGE REV. DATE

BN44-00473A

2011.03.11

5. BLOCK DIAGRAM PART

